



# VENUE RENTAL & PRIVATE HIRE

Hold your events at Lafayette Anticipations

LAFAYETTE  
ANTICIPATIONS

LA MAÎTRISE

Fondation du patrimoine des bâtiments Lafayette





FAFAY ETTE ANTI ņIPA TIONŌS

FAFAY  
ETTE  
ANTI  
ņIPA  
TIONŌS



# LAFAYETTE ANTICIPATIONS

## A new institution in Paris

Founded in October 2013 by Groupe Galeries Lafayette, Lafayette Anticipations is a public interest foundation that provides international creators from the fields of contemporary art, design and fashion with resources favouring collective creation to make, experiment with and exhibit innovative works of art. The Foundation is open to the general public; its artistic programme includes three annual exhibitions as well as series of performances and workshops.

As a production and creation centre, the Foundation is a forum for discussions, meetings and public debates around social issues that are consistently questioned by artists. Thanks to its unique ambition and identity, the Galeries Lafayette Corporate Foundation is the first multidisciplinary centre of that kind ever established in France.

*« The Foundation's artistic project is both ambitious – as it aims to create a space where anything can potentially be done – and unspecific – as we never know ahead of time what will be created. We asked our team of architects to build a very practical yet flexible space; some sort Swiss Army knife for creation. »*

Guillaume Houzé, Foundation President



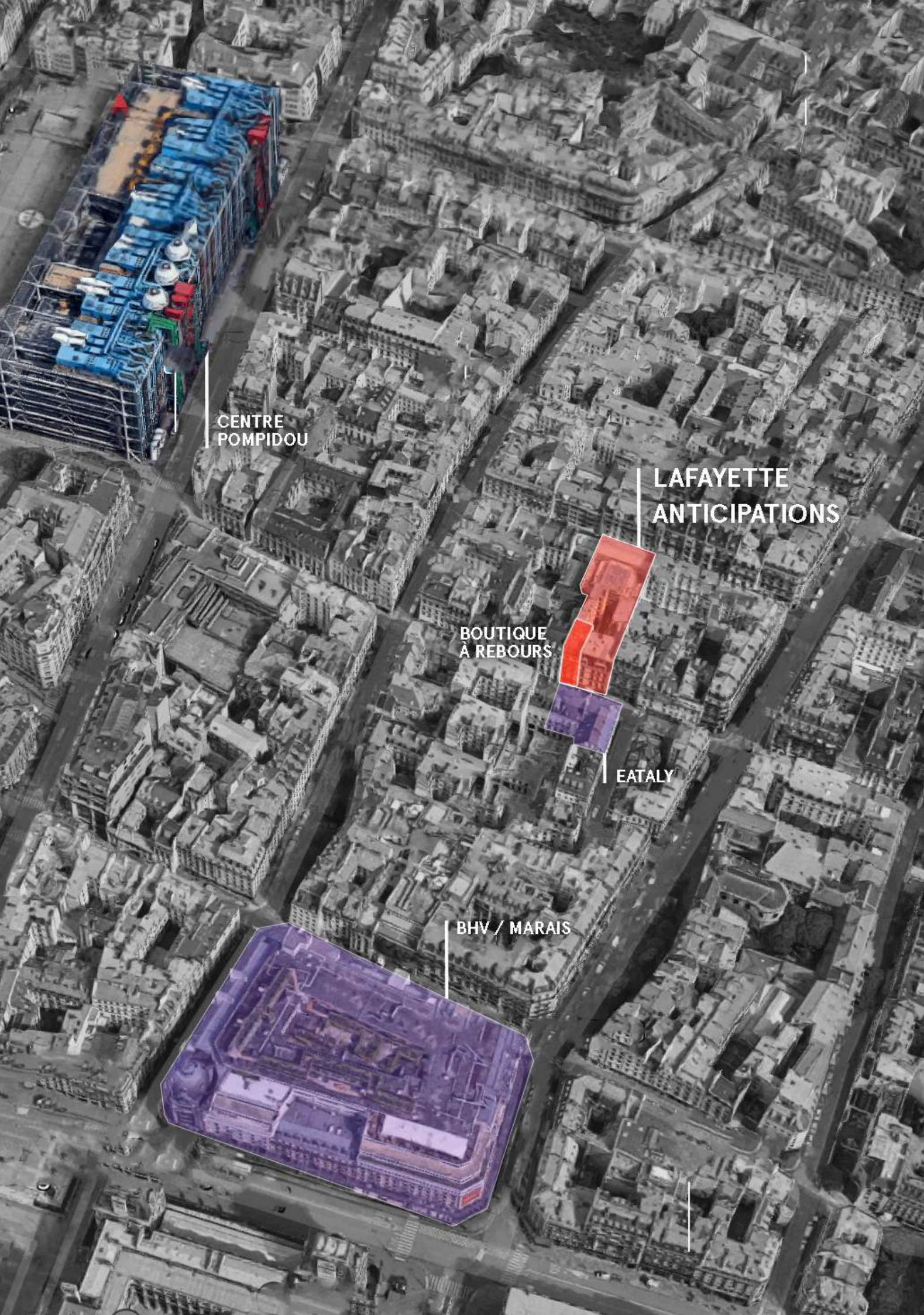
# 2019 PROGRAMME

JUILLET	AOÛT	SEPTEMBRE	OCTOBRE	NOVEMBRE	DÉCEMBRE
<b>Hella Jongerius</b> <i>Entrelacs</i> 07 June > 08 Sept.	<b>Hella Jongerius</b> <i>Entrelacs</i> 07 June > 08 Sept.	<b>Hella Jongerius</b> <i>Entrelacs</i> 07 June > 08 Sept.			
		<b>Échelle humaine</b> 12 > 22 Sept.	<b>Katinka Bock</b> 07 Oct. > 04 Jan.	<b>Katinka Bock</b> 07 Oct. > 04 Jan.	<b>Katinka Bock</b> 07 Oct. > 04 Jan.

Hella Jongerius, designer  
Échelle humaine, Dance festival  
Katinka Bock, visual artist







CENTRE  
POMPIDOU

LAFAYETTE  
ANTICIPATIONS

BOUTIQUE  
À REBOURS

EATALY

BHV / MARAIS



# THE BUILDING

The Galleries Lafayette Corporate Foundation is located in the heart of the Marais district, in a nineteenth-century industrial building renovated by Rem Koolhaas and his OMA company. The architect designed the 2,200 m<sup>2</sup> space as a 'curatorial machine', by placing a steel and glass 'exhibition tower' equipped with four mobile floors in the building's courtyard.

Such innovative platform interplay allows **49 different spatial configurations**.

The building 9 rue du Plâtre thus fulfils an aspiration to be flexible and adapt to projects hosted by the Foundation.

Following a three-year renovation, the building now offers varied and original spaces in keeping with the Foundation's trailblazing mindset.

## KEY FIGURES

Total surface  
**2 200 m<sup>2</sup>**

Exhibition spaces  
**875 m<sup>2</sup>**

4 4 mobile platforms  
**150m<sup>2</sup>**

Floors  
**7 (2 underground floors and 5 floors above ground)**

Tower height  
**19m (62ft)**

## OUR SPACES

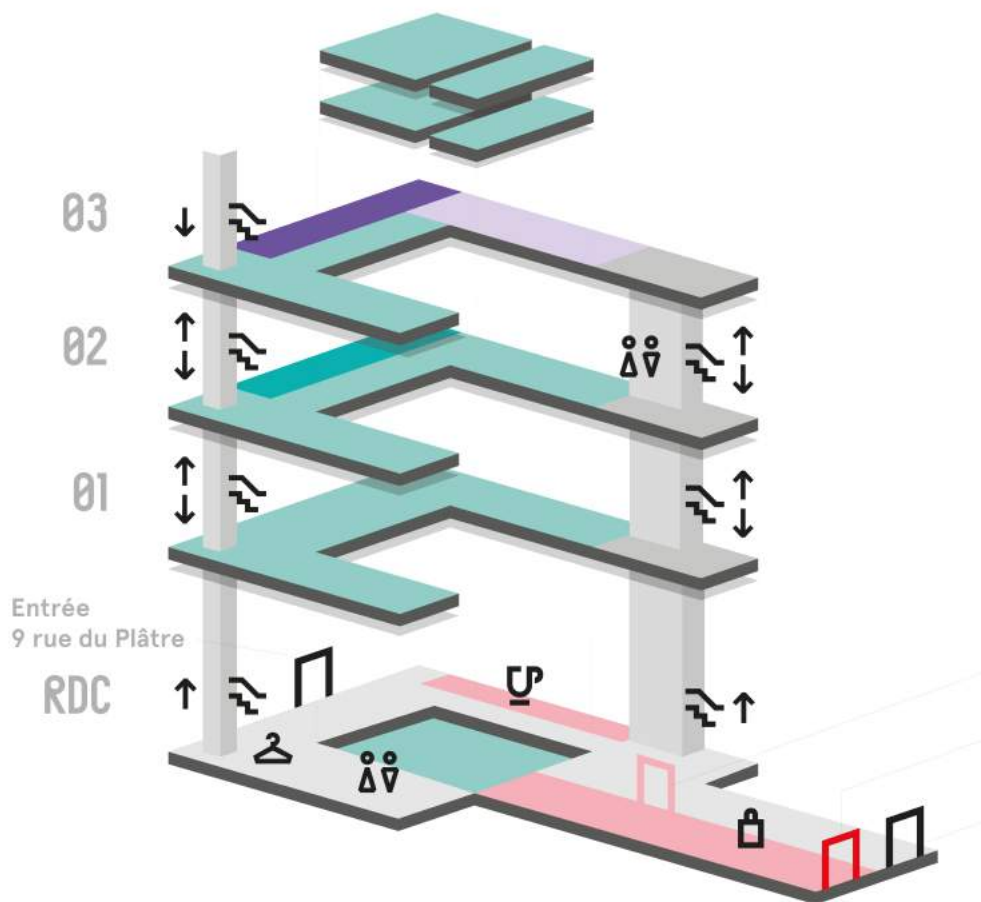
**Production workshops** 350m<sup>2</sup>  
**Studiolo** for the general public  
**Café-restaurant** Wild & The Moon  
**Shop** À Rebours

*« What is interesting and promising with Lafayette Anticipations is that its scale, in terms of current expectations, is quite intimate and small [...] So I think it can be a place of genuine focus and also authentic improvisation. »*

Rem Koolhaas, Architect (OMA)



# OUR SPACES



The entrance hall is made up of a central lobby, a reception desk and the Wild & the Moon café-restaurant. According to the various layout options, the ground floor may host a pit, a 70 m<sup>2</sup> landing, an auditorium including a stage floor, or even a platform reachable from the entrance lobby.

The aluminium and glass structure functions as a focal point with access to all upper floors.

The Exhibition Tower, an impressive glass column located at the centre of the building, is the most iconic element of this space. The moveable floors provide a great deal of flexibility, allowing to adapt the area to any form of event – provided it is in keeping with the floor configuration required by Lafayette Anticipations' ongoing artistic programme.

Privately hiring this location allows to get immersed in the very idea of a unique architecture project as well as in the Foundation's artistic mission.

# OUR SPACES

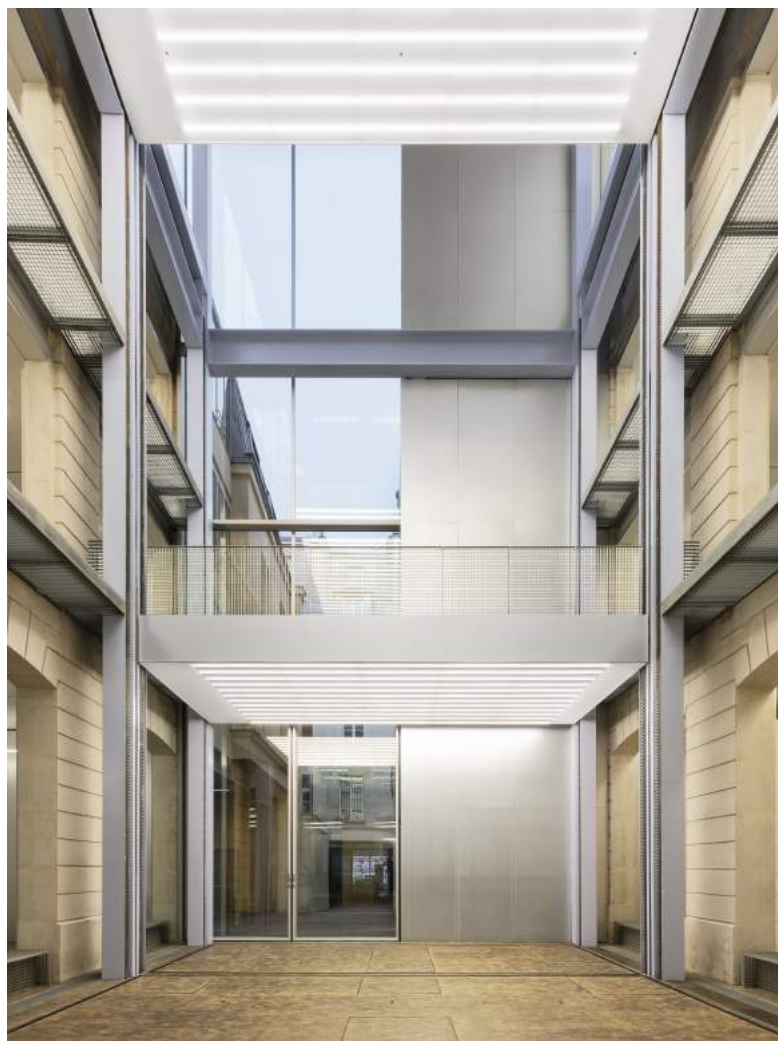
## Ground floor

**Surface :** 310 m<sup>2</sup>

Central to the Foundation, the ground floor is at once a living space, a lounge and a passageway – and as such embodies the Foundation's project. It is partitioned in several areas: the Wild & the Moon restaurant, the welcome desk and the Agora.

### **Agora :**

Located at the foot of the Exhibition Tower, it is the true heart of the Foundation – an ideal place for cocktail parties, meetings, discussions and any other medium-sized gathering. It is the perfect starting point for any of your cocktail parties and private tours.





# OUR SPACES

## Ground floor





# OUR SPACES

## N+1 –First floor

**Surface :** 215 to 285 m<sup>2</sup>

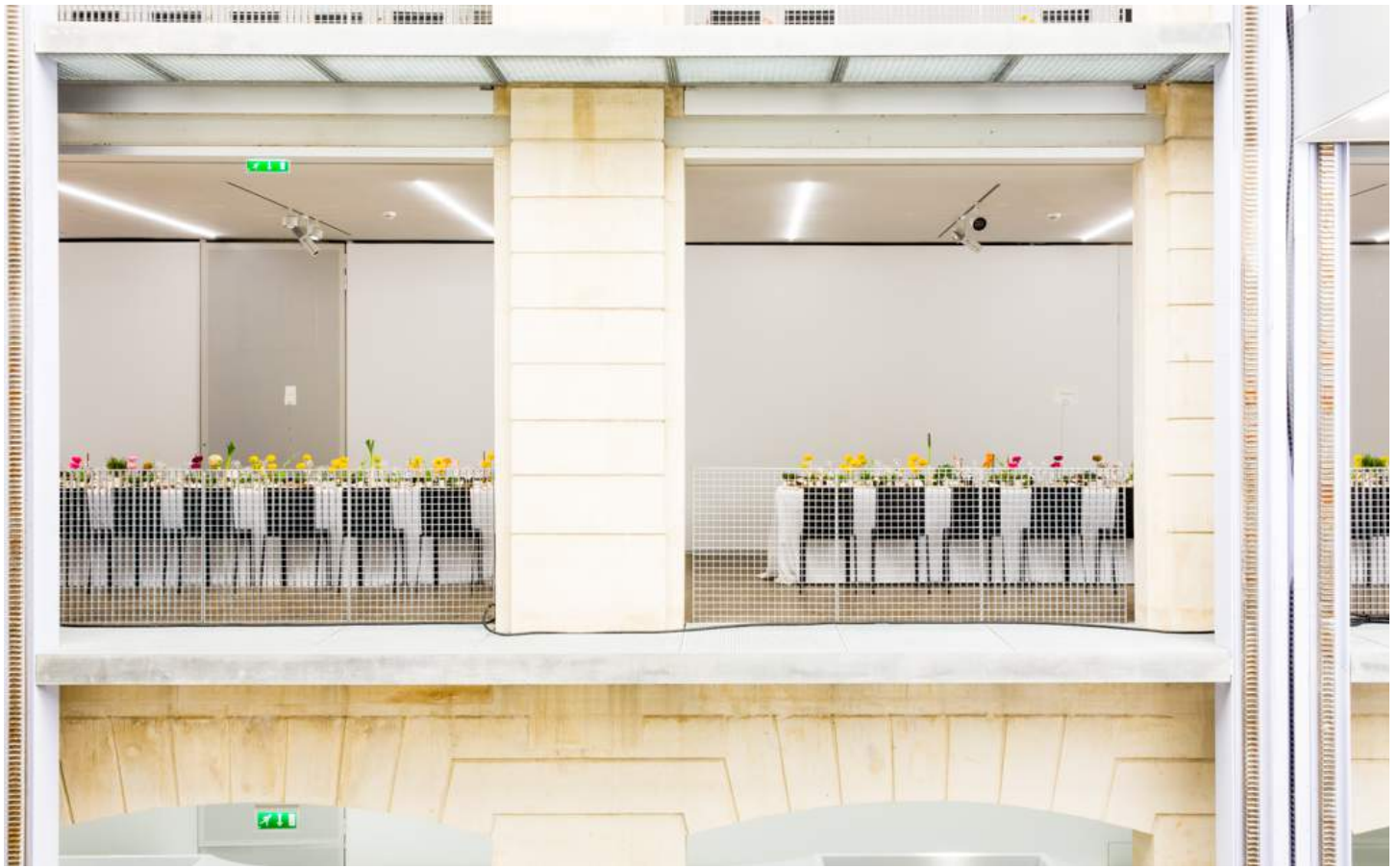
The Foundation's first floor is one of the largest floors of the building. Whichever the platform configuration, it can host seated dinners, conferences or cocktail parties. It can be set up as a single-storey area or include a view onto the lightwell from an upper floor.





# OUR SPACES

## N+1 -First floor





# OUR SPACES

## N+2 -Second floor

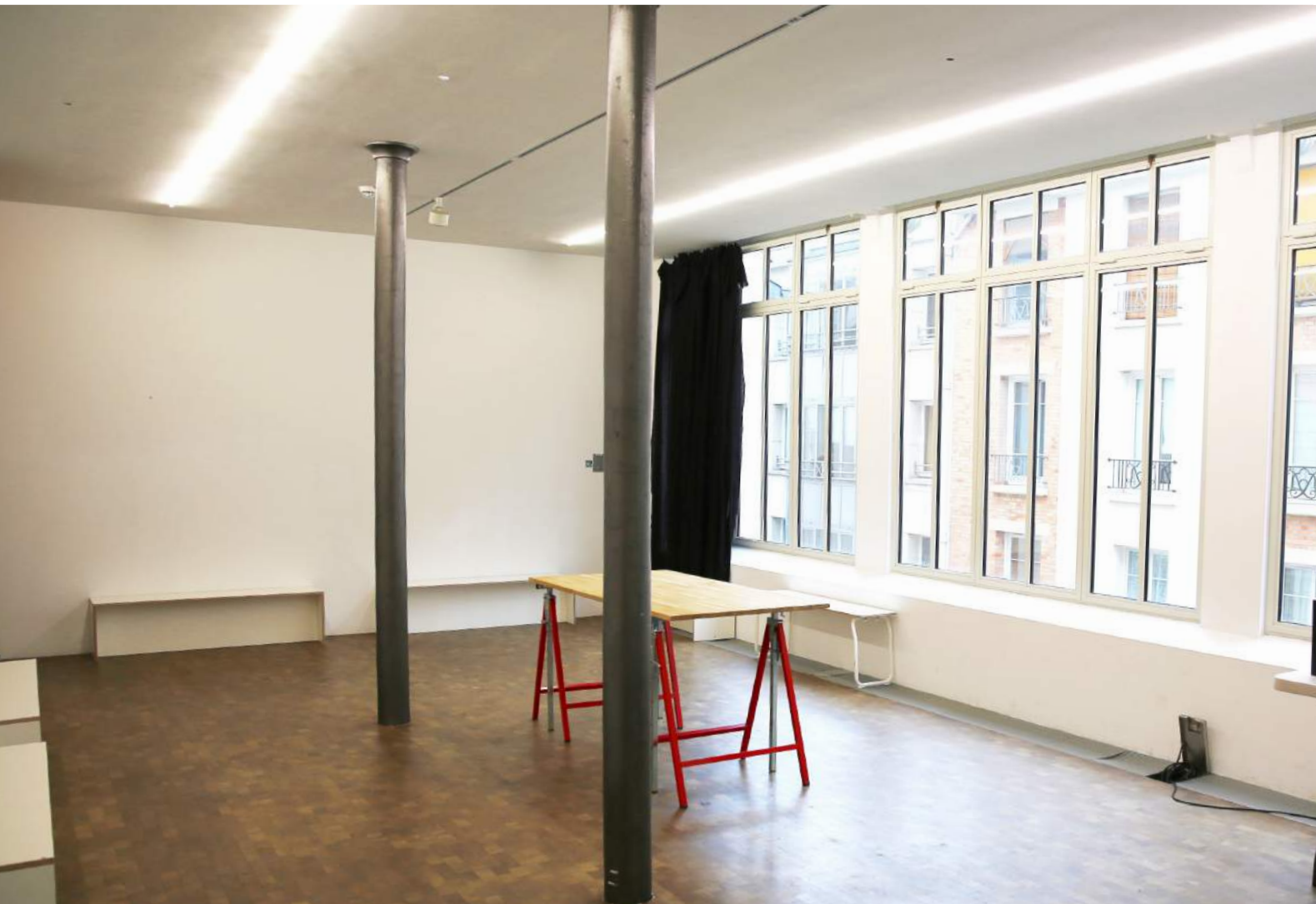
**Surface :** 135 to 205 m<sup>2</sup> + studiolo 48 m<sup>2</sup>

Floor 2 is a more intimate space, where exhibitions are set out following the setup of the mobile floors.

As an intermediate area, it provides unique access to all the exhibition tower. The view onto the arches conveys a private feel, typical of Parisian courtyards.

### **Studiolo :**

A 48 m<sup>2</sup> experimentation area dedicated to art practice and open to any kind of public, as well as a lab for radical and demanding art projects in fields such as plastic arts, fashion, design, and performance.





# OUR SPACES

N+2 -Second floor





# OUR SPACES

## N+3 -Third floor

**Surface :** 95m<sup>2</sup> incl. two platforms + Enceinte 53m<sup>2</sup>

With large openings onto the Exhibition Tower, the Foundation's third floor brings into play an indoor-outdoor contrast.

### **The Sky :**

At the centre of the third floor, the Sky is the area located beneath the glass ceiling, from which visitors can admire Parisian rooftops.

### **Enceinte :**

A 53m<sup>2</sup> large multidisciplinary space, ideal to host seminars, small working groups or screenings.





# OUR SPACES

N+3 – Third floor





# PRIVATE HIRE OF OUR SPACES

Spaces hireable for private events and capacity vary according to the ongoing exhibition; other areas may be available at times. Feel free to ask for more information about the spaces you wish to hire privately.

## PRIVATE HIRE OF THE ENTIRE BUILDING

For any kind of public or private event: fashion shows, showrooms, product launches, gala dinners, cocktail drinks, festivals, fairs...

## PRIVATE HIRE OF PART OF THE BUILDING

For seminars, meetings, private tours, business breakfasts, meetings with artists...

## FILM AND PHOTO SHOTS

Contact us to learn about the specifics of this building: its glass roof, production workshop, raw industrial service staircase...



# WILD & THE MOON

Our catering partner



A partner to the Foundation, Wild & the Moon is a caterer/café-restaurant that was created by a tribe of food lovers and connoisseurs, together with chefs, nutritionists and naturopaths, with the initial belief that organic food can be delicious – self-care is earth care.

All Wild & the Moon products are made with 100% organic, local, ethically sourced, seasonal and plant-based ingredients.

Wild & The Moon aims to voice and enhance the natural and healthy food movement.



## A TAILORED MENU

BREAKFAST

LUNCH

COCKTAILS / DINNER





# CONTACT

[privatisations@lafayetteanticipations.com](mailto:privatisations@lafayetteanticipations.com)

**Rebecca Douani**

[rdouani@lafayetteanticipations.com](mailto:rdouani@lafayetteanticipations.com)

+ 33 06 30 83 49 88

## Opening hours :

Monday : 11h-19h

Tuesday : closed - available for private hire

Wednesday : 11h-19h

Thursday : 11h-21h

Friday : 11h-21h

Saturday : 11h-19h

Sunday : 11h-19h

Photo credits : Bas Princen / Lafayette Anticipations / Wild & the Moon / Delfino Sisto Legnani and Marco Cappelletti

**LAFAYETTE**  
**ANTICIPATIONS**  
Fondation d'entreprise Galeries Lafayette

**LA MAÎTRISE**